



INTERNATIONAL JOURNAL OF ENGINEERING SCIENCES & RESEARCH TECHNOLOGY

OPTIMIZATION OF VERTICAL HANDOVER USING A DIRECTION BASED MULTIPARAMETRIC APPROACH: A REVIEW

Jyoti kumari *, Neha Mehta

* Electronics and Communication Department, Sat Kabir Institute Of Technology and Management,
Haryana, India.

ABSTRACT

WiMAX and Wi-Fi are the major 3G technology to perform high speed communication over the network. It is one of the fastest growing mobile technology in which different of data is transferred over the network. Over the past few years, rapid advances in wireless broadband networks have been driving the evolution of communication and network technologies towards next generation omnipresent computing environments. If a mobile station velocity is high and its movement pattern is irregular, unnecessary handovers likely occur more frequently, and then a seamless handover algorithm between heterogeneous wireless networks is required. This paper describes two techniques Wi-Fi (Wireless Fidelity) & WiMAX(Worldwide Interoperability for Microwave Access) used in wireless communication along with their comparison and how vertical handover takes place between these two heterogeneous techniques. Here the heterogeneity is defined in terms of WiMAX and Wi-Fi Networks. The aim of this paper is to study these two techniques and describe the basic vertical handover procedure.

KEYWORDS: IEEE 802.11, IEEE 802.16, Vertical Handover, Wi-Fi, WiMAX.

INTRODUCTION

Wireless means transmitting signals using radio waves as the medium instead of wires. WiMAX and Wi-Fi are the two techniques widely used in wireless network. WiMAX offers transmission of wireless data via a number of transmission methods; such as portable or fully mobile internet access via point to multipoint links [Wireless networks have become increasingly popular in the computing and communication industries, since their emergence in the '70s 1]. A seamless handover algorithm between heterogeneous wireless networks is one of the most critical techniques. The heterogeneous wireless networks include wireless personal, local, and broadband networks. Out of these technologies we will discuss two emerging technologies WiMAX and Wi-Fi. WiMAX and Wi-Fi are the major 3G technology to perform high speed communication over the network. It is one of the fastest growing mobile technology in which different of data is transferred over the network. But when a mobile node moves outside the coverage area of its base station, it is required to switch to some other base station. This process is called handover. When work with dissimilar networks, it is called Vertical Handover [1][2]. Among several candidate technologies for the numerous wireless broadband

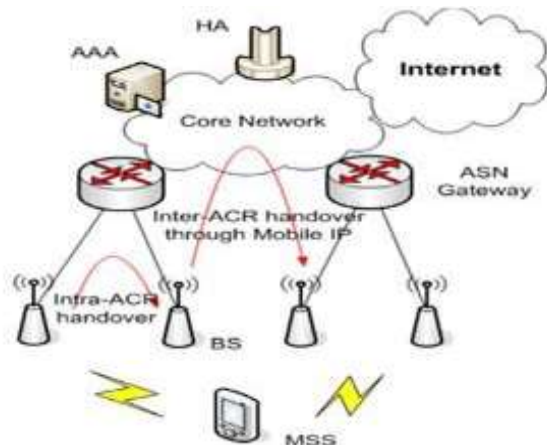
networks, IEEE 802.16-operated WiMAX shows promising potentials. IEEE 802.16 Fixed WiMAX has been developed by the IEEE 802.16 standard activities. Because it cannot support the mobility of terminals, IEEE802.16 Fixed WiMAX is not suitable for mobile computing environments. Thus, to support mobility on terminal stations, IEEE 802.16e Mobile WiMAX standard is proposed [1][8]. Due to the mobility in IEEE 802.16e Mobile WiMAX, an interworking scheme between heterogeneous networks, i.e., vertical handover is essentially required. Under this requirement, this paper addresses a basic vertical handover algorithm for interworking between IEEE 802.11 WLAN and IEEE 802.16e Mobile WiMAX. To date, not much attention has been paid to the handoffs between IEEE 802.11 WLAN and IEEE 802.16e WiMAX.

Wi-MAX TECHNOLOGY

WiMAX stands for Worldwide Interoperability for Microwave Access. WiMAX technology is a telecommunications technology that offers transmission of wireless data via a number of transmission methods; such as portable or fully mobile internet access via point to multipoint links [3]. The WiMAX technology offers around 72 Mega Bits per second without any need for the cable

infrastructure [9]. WiMAX technology is based on Standard that is IEEE 802.16, it usually also called as Broadband Wireless Access. WiMAX Forum created the name for WiMAX technology that was formed in Mid June 2001 to encourage compliance and interoperability of the WiMAX IEEE 802.16 standard. WiMAX technology is actually based on the standards that making the possibility to delivery last mile broadband access as a substitute to conventional cable and DSL lines.

Figure shows the architecture of mobile WiMAX network in terms of the network elements and their functions [3][4]. There are four main components in the architecture: MSS (Mobile Subscriber Station), BS (Base Station), ASN (Access Service Network) Gateway, and core network. The MSS communicates with the BS using IEEE 802.16e wireless access technology. The MSS also provides the functions of MAC processing, mobile IP, authentication, packet retransmission, and handover. The BS provides wireless interfaces for the MSS and takes care of wireless resource management, QoS(Quality of service) support, and handover control. The ASN Gateway plays a key-role in IP-based data services including IP packet routing, security, QoS and handover control. The ASN Gateway also interacts with the AAA (Authentication, Authorization, and Accounting) server for user authentication and billing. To provide mobility for the MSS, a ASN Gateway supports handover among the BSs while the mobile IP provides handover among ASN Gateways as shown in Figure.



Network Architecture of Mobile WiMAX [3][4]

Wi-Fi TECHNOLOGY

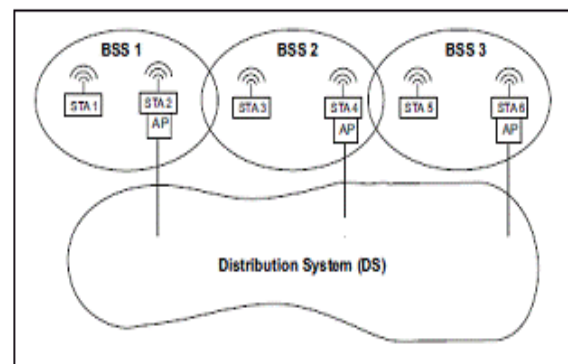
Wireless Fidelity (Wi-Fi) is a wireless technology which provides internet connectivity or connectivity among the users. In 1997 IEEE provide a set of specification and standards for Wi-Fi which is under the title 802.11 that explains the structure of the

comparatively short range radio signal for Wi-Fi service. After that several specifications came and most commonly used specifications today are 802.11b, 802.11g and 802.11a [9]. Out of these three, 802.11a can provide higher speeds within the various radio frequencies. IEEE is now working for a new standard 802.11n which is more reliable, secure and faster than the other standard. Originally Wi-Fi was created for wireless extension for the wired LAN. That's why the distance between the Wi-Fi access point and user equipment is limited to around 100 feet indoor and up to 300 feet outdoors [3]. So if a user moves its computer to a new location, he/she should find a new access point for continuing the communication.

The equipment, its maintenance and servicing cost is cheap in Wi-Fi, so it is widely accepted throughout the world and it is widely used in a restaurants, hotels, airports and school campuses. It is also work well in the auditoriums, meeting rooms and small businesses. Internet service providers also use it for individual home connectivity and connectivity to the commercial complexes. All wireless devices that join a Wi-Fi network, whether mobile, portable or fixed, are called wireless stations (STAs). A wireless station might be a PC, a laptop, a PDA or a phone. When two or more STAs are wirelessly connected, they form a basic service set (BSS). This is the basic building block of a Wi-Fi network.

A common distribution system (DS) and two or more BSSs create what is called an extended service set (ESS). An ESS is a Wi-Fi network of arbitrary size and complexity. Fig 2 is a representation of an ESS comprised of BSS 1, 2 and 3. The distribution system is not part of the ESS. The distribution system enables mobility in a Wi-Fi network by a method of tracking the physical location of STAs, thus ensuring that frames are delivered to the AP associated with the destination

STA. Mobility means a wireless client can move anywhere within the coverage area of the ESS and keep an uninterrupted connection.



ESS (Extended Service Set)

These two wireless technologies have common components in their operations with a major difference in the communication range. The following table below gives the detailed comparative analysis of the two broadband wireless access networks (Wi-Fi and WiMAX):

Table 1. Comparison between WiMAX and Wi-Fi
[7]

Feature	WiMAX(IEEE 802.16a)	Wi-Fi(IEEE 802.11b)	Wi-Fi(IEEE 802.11a/g)
Primary Application	Broadband Wireless Access	Wireless LAN	Wireless LAN
Frequency Band	Licensed/Unlicensed 2GHz to 11GHz	2.4 GHz ISM	2.4 GHz ISM(g) 5 GHz U-NII(a)
Bandwidth Efficiency	<=5 bps/Hz	<=0.44 bps/Hz	<=2.7 bps/Hz
Modulation	BPSK,QPSK,16,64,256-QAM	QPSK	BPSK,QPSK
FEC	Convolution Code Reed-Solomon	None	Convolution Code
Encryption	Mandatory-3DES	Optional-RC4	Optional- RC4
Mobility	Mobile WiMAX(802.16e)	in development	In development
Mesh	Yes	Vendor Proprietary	Vendor Proprietary
Access Protocol	Request Grant	CSMA/CA	CSMA/CA

ANALOGY BETWEEN WIMAX AND WI-FI

Wi-Fi can operate at distances as great as WiMAX but there are two reasons why it doesn't. One of the reasons is that radios operating in the unlicensed frequencies are not allowed to be as powerful as those operated with licenses; and from convention, less power means less distance [7]. The second reason as to why Wi-Fi access points don't serve as wide an area as WiMAX is that the Wi-Fi MAC layer uses contention access. This causes users to compete for data throughput to the access point. Wi-Fi even has problems with interference, and throughput and that is why triple play (voice, data, and video) [7] technologies cannot be hosted on traditional Wi-Fi. In contrast, 802.16 use a scheduling algorithm (Xu, et al., 2006). This algorithm allows the user to only compete once for the access point. This gives WiMAX inherent advantages in throughput, latency, spectral efficiency, and advanced antenna support. From the technical point of view, it can be seen that both of these two wireless technologies are not basically addressed at the same market but are very complementary. Wi-Fi is basically an implementation of wireless local area network within a short range like a small building, a college or an institutional campus. WiMAX on the other hand is a metropolitan technology whose objective is to interconnect houses, buildings or even

hot spots to allow communication between them and with other networks.

Advantages and Disadvantages of WiMAX and Wi-Fi

- The WiMAX specification provides symmetrical bandwidth over many kilometers and range with stronger encryption (TDES or AES) and typically less interference. Wi-Fi is short range (approximately 10's of meters) has WEP or WPA encryption and suffers from interference as in metropolitan areas where there are many users [7].
- It provides connectivity between network endpoints without the need for direct line of sight in favorable circumstances. The non-line-of-sight propagation (NLOS) performance requires the .16d or .16e revisions, since the lower frequencies are needed. It relies upon multi-path signals, somewhat in the manner of 802.11n.
- One disadvantage of WiMAX is the spectral limitation, in other words limitation of wireless bandwidth. For use in high density areas, it is possible that the bandwidth may not be sufficient to cater to the needs of a large clientele, driving the costs high [9].
- A disadvantage of WiMAX over Wi-Fi is that, where with Wi-Fi anyone can set up a wireless network for free, not everyone can set up a WiMAX wireless network; and one must pay incredibly huge amounts of money to be given the right to set up a WiMAX wireless network in a region. This is because the frequency used by the WiMAX standard is licensed by the government.

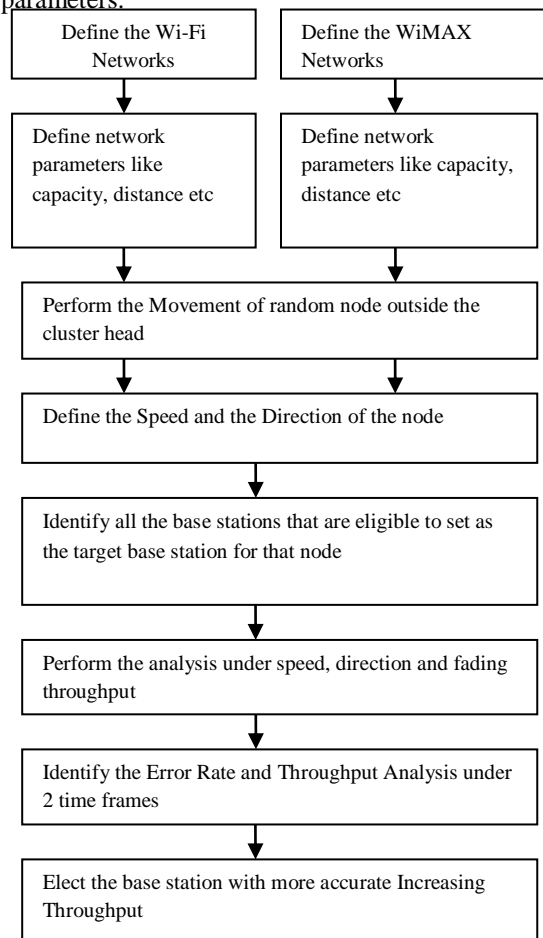
WiMAX or Wi-Fi?

WiMAX technology has several advantages compared to Wi-Fi. Such as: a better reflection tolerance; a better penetration of obstacles; and an increased in the number of interconnections (a few hundreds of equipment rather than some tens of equipment for Wi-Fi). It's obvious that the WiMAX standard goal is not to replace Wi-Fi in its applications but rather to supplement it in order to form a wireless network web. Despite the similarity in equipment cost, WiMAX technology requires a costly infrastructure in contrast to Wi-Fi which can easily be installed using low cost access points [7].

VERTICAL HANDOVER

Diverse processes are required in order to perform a Vertical Handover (VHO). VHO process into three phases: i) Handover information gathering, ii) Handover decision, and iii) Handover execution [2][3]. The information gathering phase is in charge of collecting relevant information from diverse context sources such as network capabilities, access

points, user equipments, and user preferences. The most critical process in a VHO process is the decision phase since, depending on the network candidate chosen, the performance of the system could improve or decrease. This decision should consider several parameters in order to choose the best candidate network to hand over to [6]. The execution phase is in charge of committing the VHO itself. In this process the UE (User Equipment) leaves the current network and gets attached to a new network in a seamless manner, experiencing low latencies and minimal packet loss. This flow chart is about the selection of the next target cell as a node move outside its coverage area. There are number of possible base stations that are having the coverage to that node will poll to get the access. The coverage will be decided under the distance coverage. The presented flow chart is about to select this target base station. In flow chart we have defined multiple parameters.



Flow Chart of Vertical Handover

In this flow chart to compare the Wi-Fi and WI-Max network and first of all define the network parameters such as capacity, distance, bandwidth and diameters of the network after that to check the movement of

the nodes i.e. either randomly or behalf of the cluster head. Cluster head define the speeds and the direction of movement in the network area and cluster head also identifying all the base station that are lies in these network area or to the target of particular node. Base station perform the analysis of the nodes or the cluster head and to find the throughput of the nodes i.e. the number of the cycle to complete the execution. Identify the error rate according to time frame schedule these are depends on time division multiplexing. Elect the base station with accurate data to increasing throughput and calculate the speeds, diameters and to the target of the node.

CONCLUSION

The two most prominent developing wireless access networks has been presented in a precise manner and even discussed the method by which these technologies may collaborate together to form an alternatives for implementing last-mile wireless broadband services. Detailed technical comparative analysis between the 802.11 (Wi-Fi) and 802.16 (WiMAX) wireless networks that provide alternative solution to the problem of information access in remote inaccessible areas where wired networks are not cost effective has been looked into. As we have studied above one of the major problems of the mobile networks is the degradation of the throughput during the handover mechanism. The presented work provides the basic operation of a seamless vertical handover process that can takes place under hybrid networks in order to reduce the error rate and improve throughput over the wireless communication.

REFERENCES

- [1] Wonjun Lee, " Movement-Aware Vertical Handoff of WLAN and Mobile WiMAX for Seamless Ubiquitous Access", IEEE Transactions on Consumer Electronics 0098 3063/07 © 2007 IEEE
- [2] Bushra Naeem, " Seamless Vertical Handover in Wi-Fi and WiMAX Networks using RSS and Motion Detection: An Investigation" The Pacific Journal of Science and Technology Volume 12. Number 1. May 2011 (spring)
- [3] Deep Kaur, Vishal Arora, " Research Agenda for Vertical Handover between WiMAX and Wi-Fi Networks" International Journal of Emerging Research in Management &Technology ISSN: 2278-9359 January 2013
- [4] Jaeho Jo, " A Cross-layer Vertical Handover between Mobile WiMAX and 3G

- Networks”, 978-1-4244-2202-9/08© 2008 IEEE
- [5] Yu-Chang Chen,” Advanced seamless vertical handoff architecture for WiMAX and Wi-Fi heterogeneous networks with QoS guarantees” Y.-C. Chen et al. / Computer Communications 32 (2009) 281–293
- [6] Deep Kaur, Vishal Arora, “Performance Analysis of Vertical Handover between WiMAX and Wi-Fi Network” International Journal of Advanced Research in Computer Science and Software Engineering ISSN: 2277 128X Volume 3, Issue 1, January 2013
- [7] Sourangsu Banerji,” Wi-Fi & WiMAX: A Comparative Study”
- [8] IEEE LAN/MAN Standards Committee, “IEEE Standard for Local and metropolitan area networks, Part 16: Air Interface for Fixed Broadband wireless Access Systems,” IEEE Std 802.16-2001, 2001.